

ACHIEVE MORE WITH EUS



The Beacon™ EUS Delivery System
Acquire confidence in your diagnosis

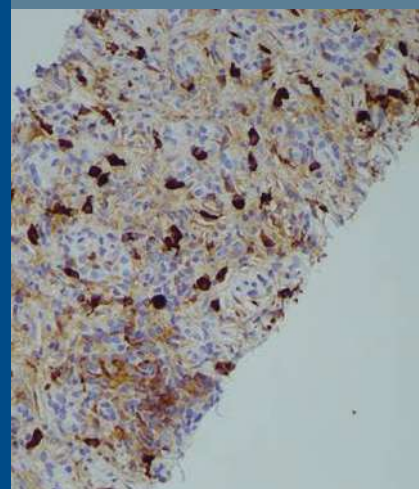
Medtronic
Further. Together

ACHIEVE MORE WITH EUS



Obtaining adequate tissue samples is essential for making an accurate diagnosis—for you and your pathology team. With Beacon™ needles specifically designed to **optimize the consistency, volume, and quality of tissue samples, the Beacon™ EUS delivery system can help improve diagnostic rate.**^{1,2}

IgG4 IHC, autoimmune pancreatitis tissue sample acquired with SharkCore™ FNB needle



ONE DELIVERY SYSTEM. MULTIPLE INNOVATIONS.

SharkCore™ FNB Needle and Beacon™ FNA Needle

- Unique needle tip geometry features six distal cutting edges **engineered to acquire cohesive units of tissue**¹ with the SharkCore™ FNB needle
- Minimizes tissue stacking and fracturing, potentially leading to better core samples³
- Four cutting edges **improve tissue yield for cytology** with the Beacon™ FNA needle¹

Beacon™ FNF Needle

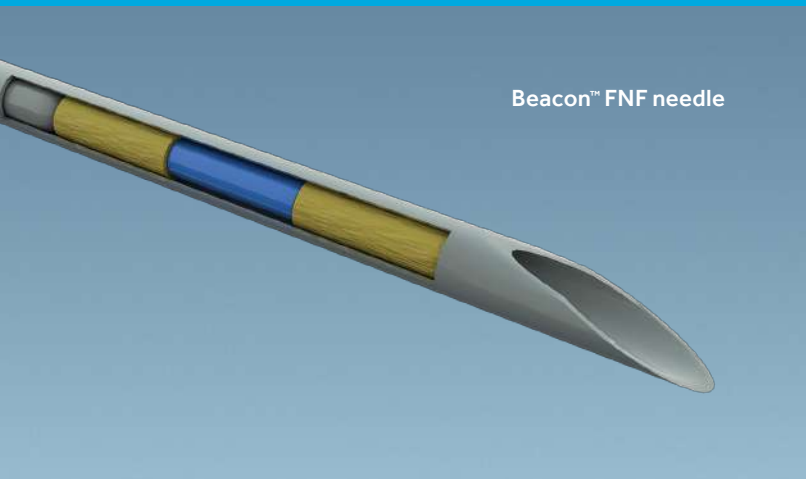
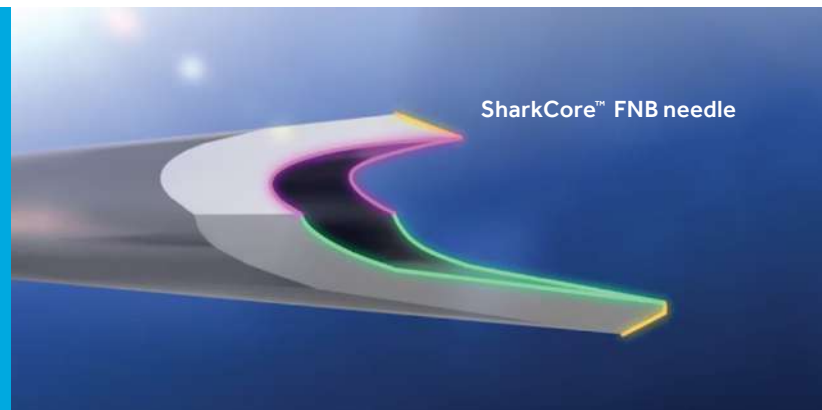
- Unique fiducial needle **pre-loaded with two solid-gold markers for easy, efficient placement**^{4,5}
- Markers generate a clear echogenic response⁶
- Fiducial markers feature a **knurled design intended to reduce migration**⁷⁻¹¹
- Physician deployment indicator provides **visual and tactile feedback** for the confident deployment of each fiducial marker

Interchangeability, Efficiency and Safety

- Streamlined procedure enables **greater flexibility in the face of unpredictable hurdles** while performing FNA, FNB, or FNF placement
- **Reduced procedural time** when multiple needles are used²
- Passively activated **safety sheath** minimizes risk of needle stick injury

"When the pathologist looks at these tissue samples, they're able to see tissue architecture, they're able to do better stains, they're able to make a better diagnosis."

-Dr. Murad, Gastroenterologist,
NorthShore University Health System, Chicago



TAKING EUS FURTHER, TOGETHER

See what's possible with the Beacon™ EUS delivery system

US Beacon™ Product List		
Code	Description	Unit of Measure
US Beacon™ FNA Needle Product List		
DSN-19-01	Beacon™ EUS Delivery System with FNA Needle 19 Gauge Nitinol	Each
DSN-22-01	Beacon™ EUS Delivery System with FNA Needle 22 Gauge Stainless Steel	Each
DSN-25-01	Beacon™ EUS Delivery System with FNA Needle 25 Gauge Stainless Steel	Each
N-19-05	Beacon™ FNA Needle 19 Gauge Nitinol	Box of 5
N-22-05	Beacon™ FNA Needle 22 Gauge Stainless Steel	Box of 5
N-25-05	Beacon™ FNA Needle 25 Gauge Stainless Steel	Box of 5
US SharkCore™ FNB Needle Product List		
DSL-19-01	Beacon™ EUS Delivery System with SharkCore™ LG FNB Needle 19 Gauge	Each
L-19-05	SharkCore™ LG FNB – 19 Gauge	Box of 5
DSC-22-01	SharkCore™ FNB Biopsy System with Needle – 22 Gauge	Each
DSC-25-01	SharkCore™ FNB Biopsy System with Needle – 25 Gauge	Each
C-22-05	SharkCore™ FNB Needle – 22 Gauge	Box of 5
C-25-05	SharkCore™ FNB Needle – 25 Gauge	Box of 5
US Beacon™ FNF Needle Product List		
DSF-19-01	Beacon EUS delivery system with FNF Pre-loaded 19 gauge	Each
DSF-22-01	Beacon EUS delivery system with FNF Pre-loaded 22 gauge	Each
F-19-05	Beacon EUS FNF Pre-loaded 19 gauge needle	Box of 5
F-22-05	Beacon EUS FNF Pre-loaded 22 gauge needle	Box of 5

Medtronic is committed to partnership with pathologists, radiologists and the GI community as a whole as we pursue our shared goal of early detection of chronic GI diseases and cancers.

Contact your Medtronic representative for more information, or visit medtronic.com/gi

Caution: Federal law restricts this device to sale by or on the order of a licensed healthcare practitioner. Rx only.

Risk Information: Beacon™ FNA Needle: Procedural risks associated with gastrointestinal endoscopy include, but are not limited to: perforation, hemorrhage, aspiration, fever, hypotension, respiratory depression or arrest, cardiac arrhythmia or arrest, infection, allergic reaction to medication, damage to blood vessels, nerve damage, tumor seeding of the needle tract, and acute pancreatitis. Please refer to the product user manual or medtronic.com/gi for detailed information.

SharkCore™ FNB Needle: Procedural risks associated with gastrointestinal endoscopy include, but are not limited to: perforation, hemorrhage, aspiration, fever, hypotension, respiratory depression or arrest, cardiac arrhythmia or arrest, infection, allergic reaction to medication, damage to blood vessels, nerve damage, and acute pancreatitis. Procedural risks associated with EUS needle biopsy include but are not limited to bleeding, pain, death, peritonitis, infection/bacteremia, tumor seeding of the needle tract, and needle fracture requiring intervention for removal. Please refer to the product user manual or medtronic.com/gi for detailed information.

Beacon™ fine needle pre-loaded fiducial system: Procedural risks associated with gastrointestinal endoscopy include, but are not limited to: perforation, hemorrhage, aspiration, hypotension, respiratory depression or arrest, cardiac arrhythmia or arrest, infection/fever, bacteremia, allergic reaction to medication, damage to blood vessels, nerve damage, tumor seeding of the needle tract and acute pancreatitis. Those associated with EUS fiducial placement include, but are not limited to: improper fiducial placement, fiducial migration, infection/fever, allergic reaction, local inflammatory foreign body response, minor bleeds, pain, pancreatitis, and needle fracture requiring intervention for removal. Please refer to the product user manual for detailed information.

References: 1. Based on product development testing data. Data on file (Report #1085 and Report #1090). 2. Enestvedt, BK, et al. Is Two Better Than One? A Comparison of EUS-FNA Efficiency of Single- vs Multi-Needle Platforms. *Gastrointestinal Endoscopy*. Volume 77, Issue 5, AB179. 3. When compared to Beacon™ FNA needles based on test results (Report #1085). 4. PN1006697-A. 5. RMD-10014 Rev 01 page 5. 6. TR-20015 rev 01, page 4,10. 7. RMD-10014 rev 01, page 28. 8. TR-20015 rev 01, page 4,10. 9. Pouliot J, Aubin M, Langen KM, Liu YM, Pickett B, Shinohara K, et al. (Non)-migration of radiopaque markers used for on-line localization of the prostate with an electronic portal imaging device. *International Journal of Radiation Oncology, Biology, Physics*. 2003;56(3):862-866. 10. <http://www.civco.com/ro/About-Us.htm>. 11. <http://www.civco.com/ro/fiducial-markers/standard-gold-soft-tissue-marker/gold-soft-tissue-markers-FMC12.htm>.